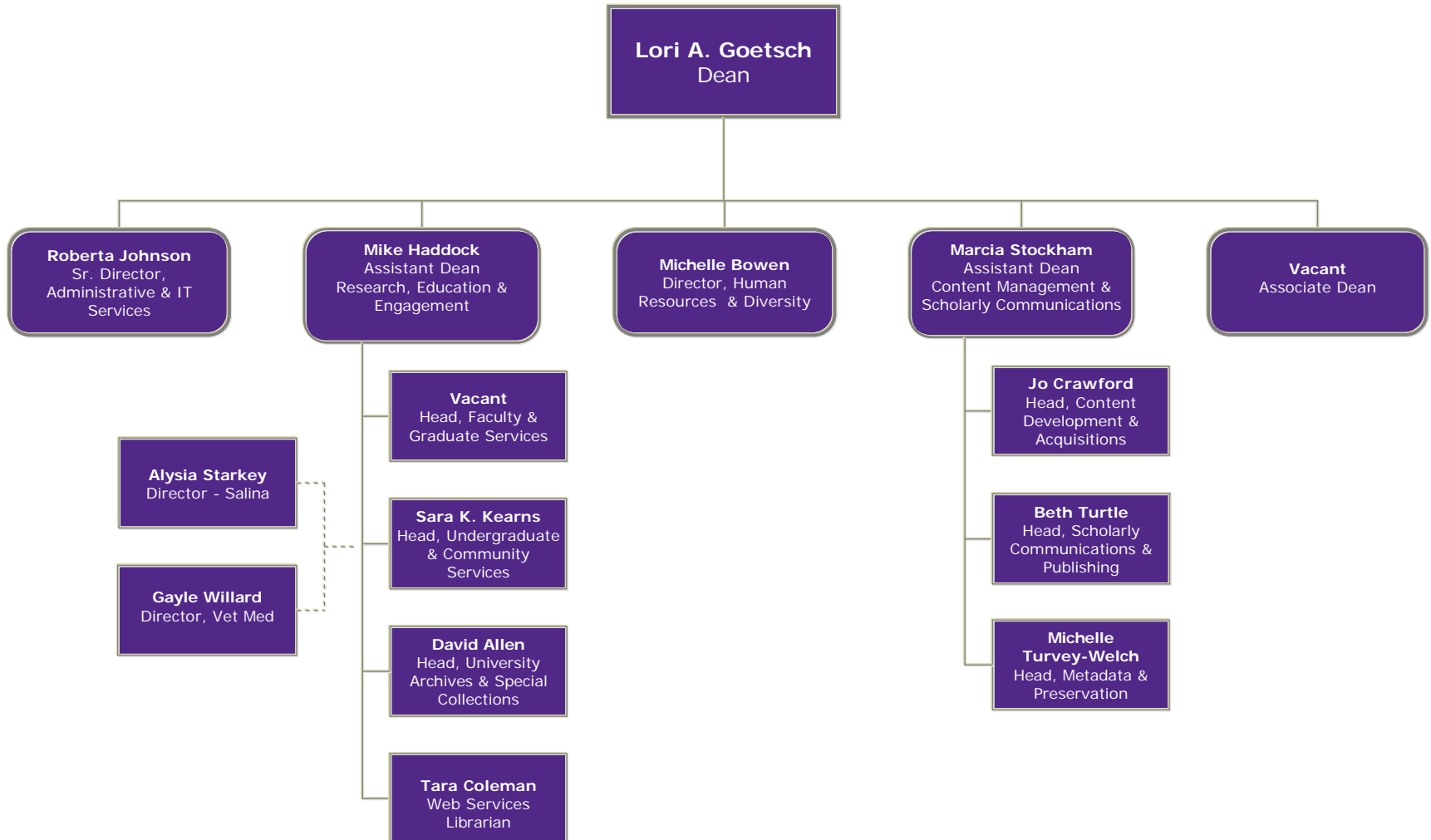
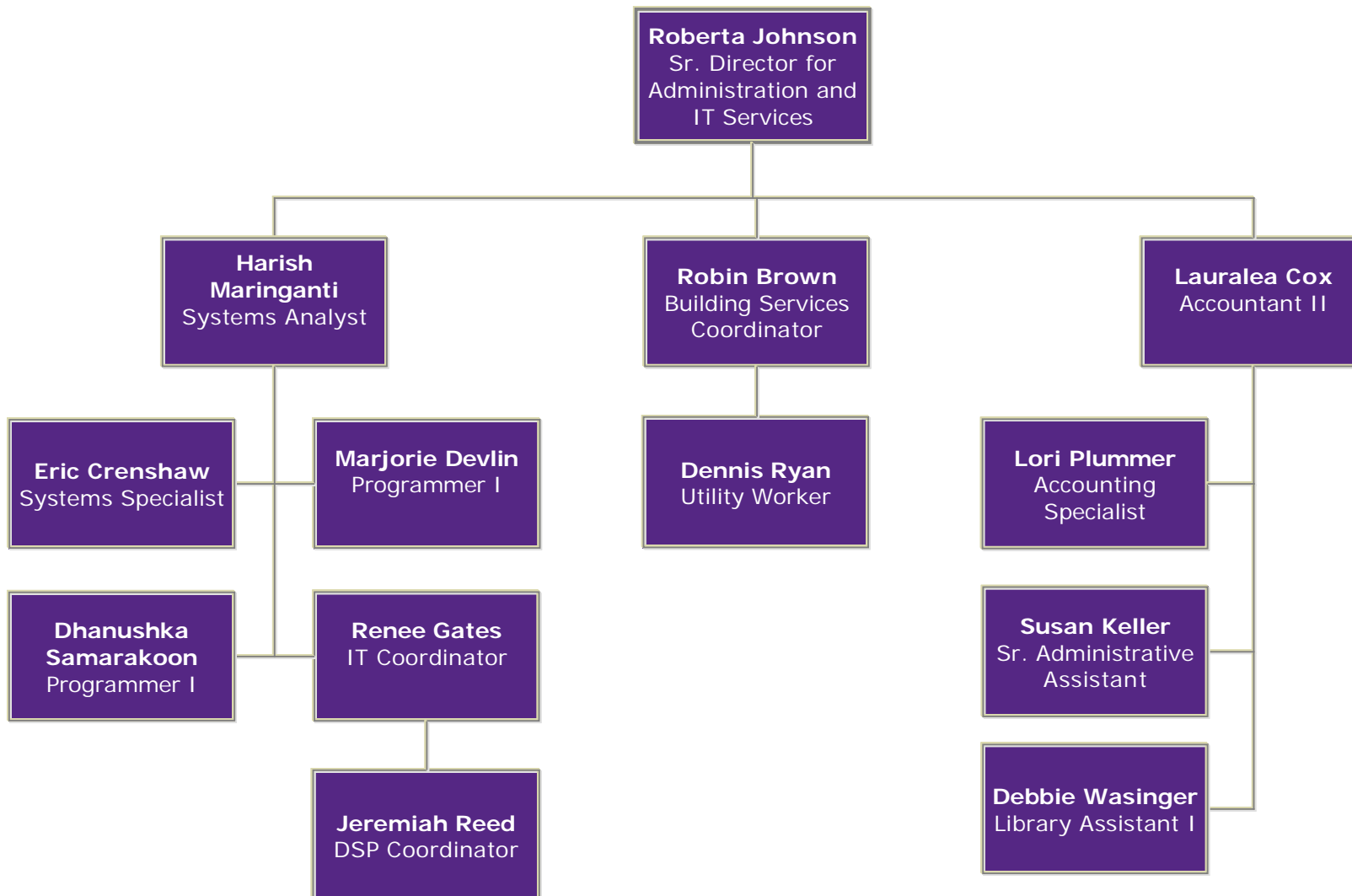


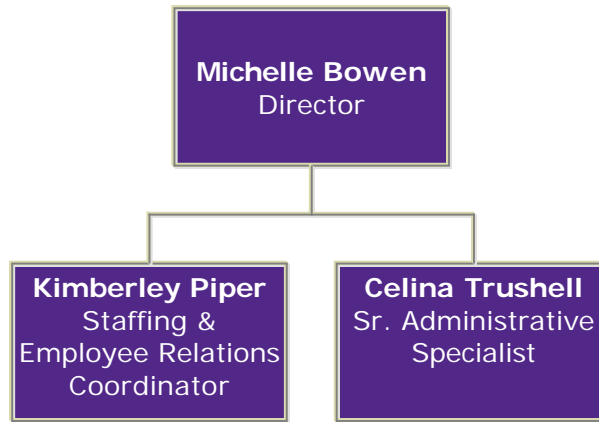
# Organizational Chart

Updated 05-04-12

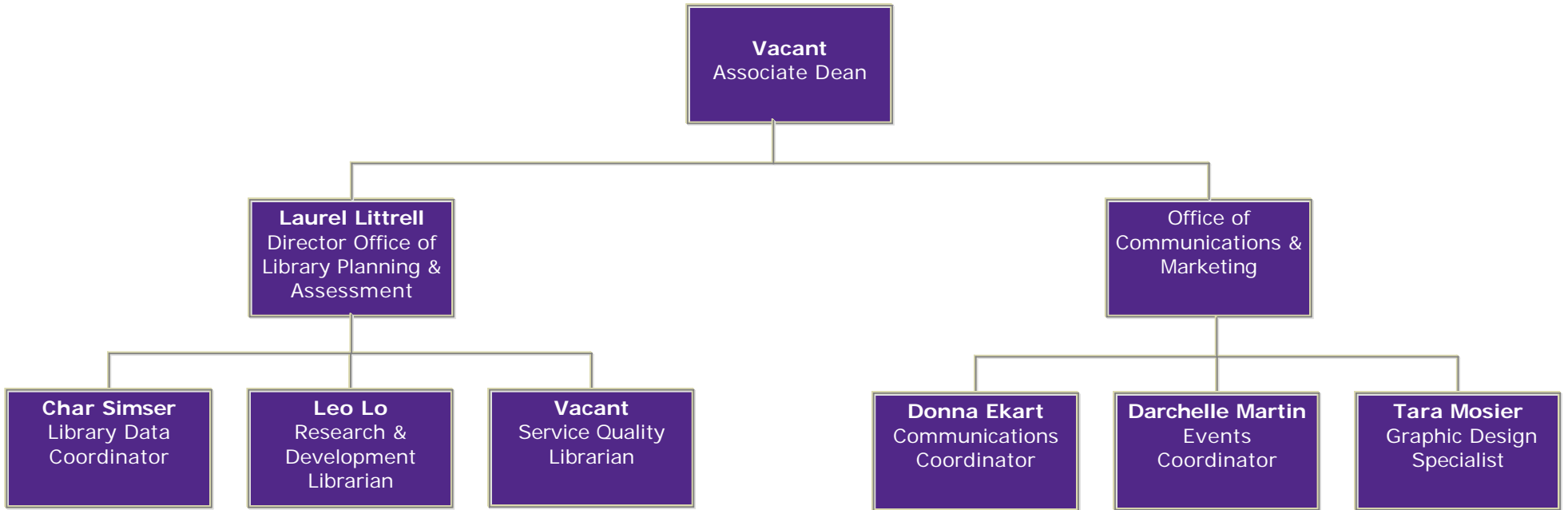




### Human Resources

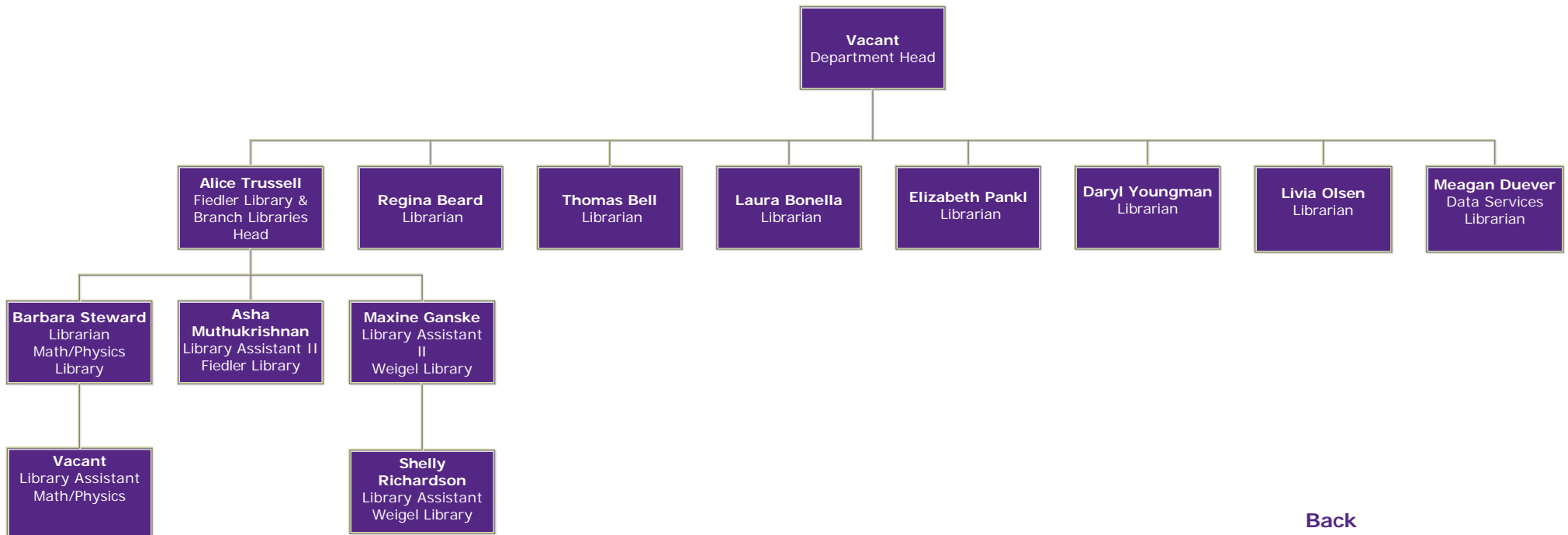


[Back](#)



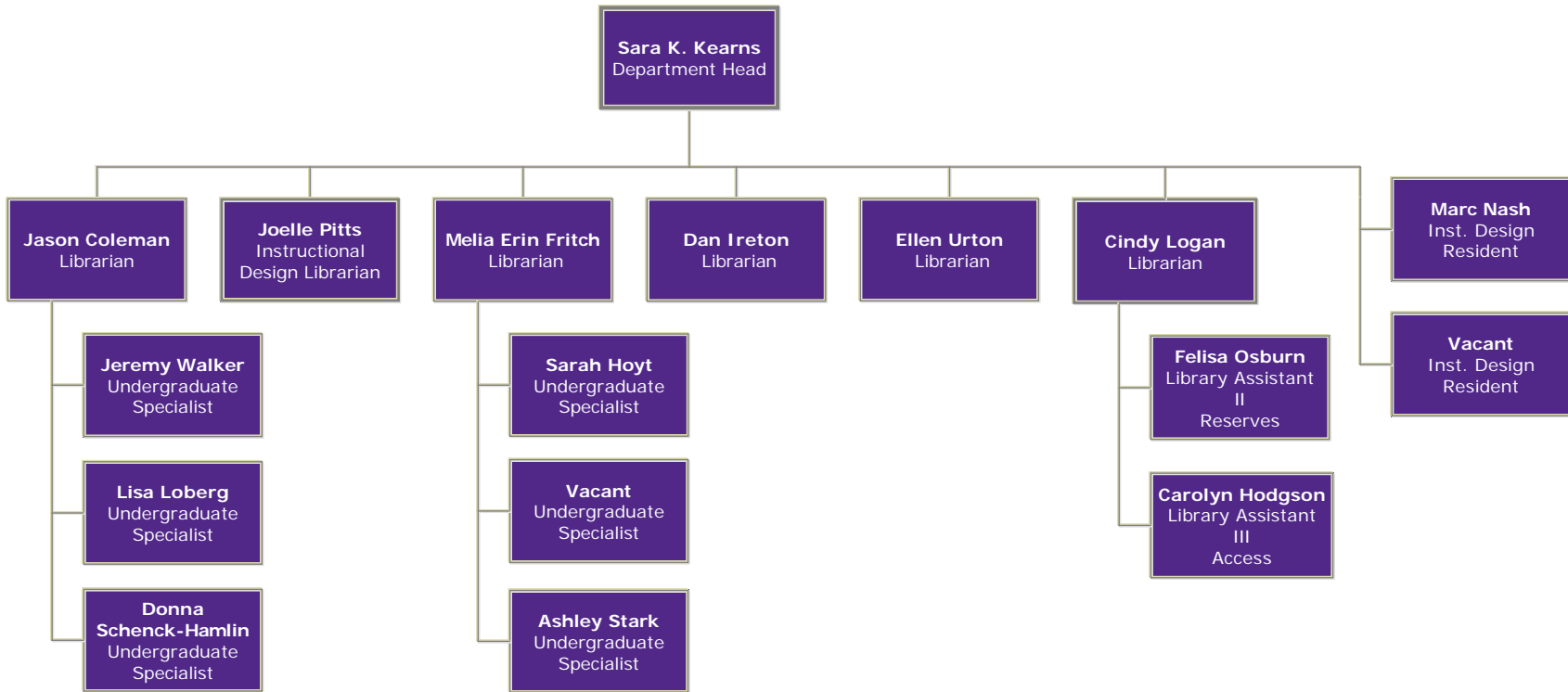
[Back](#)

Faculty & Graduate Services Department

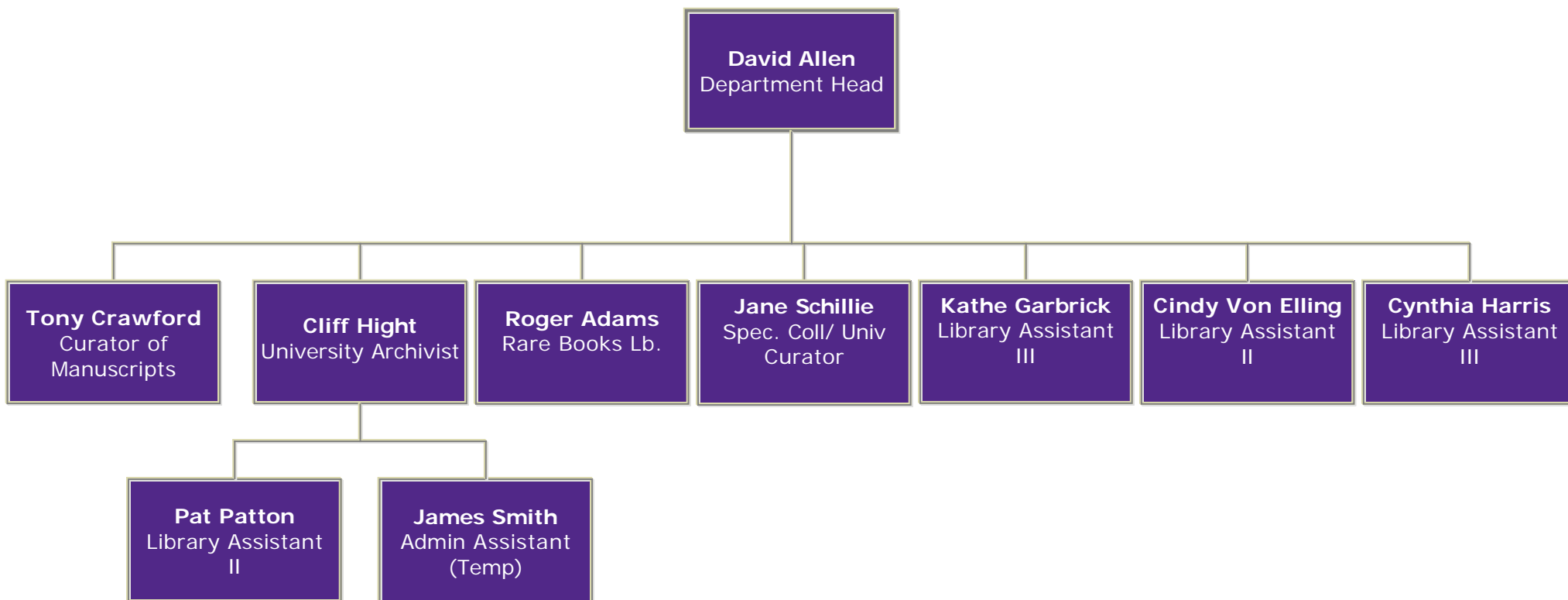


[Back](#)

### Undergraduate & Community Services Department

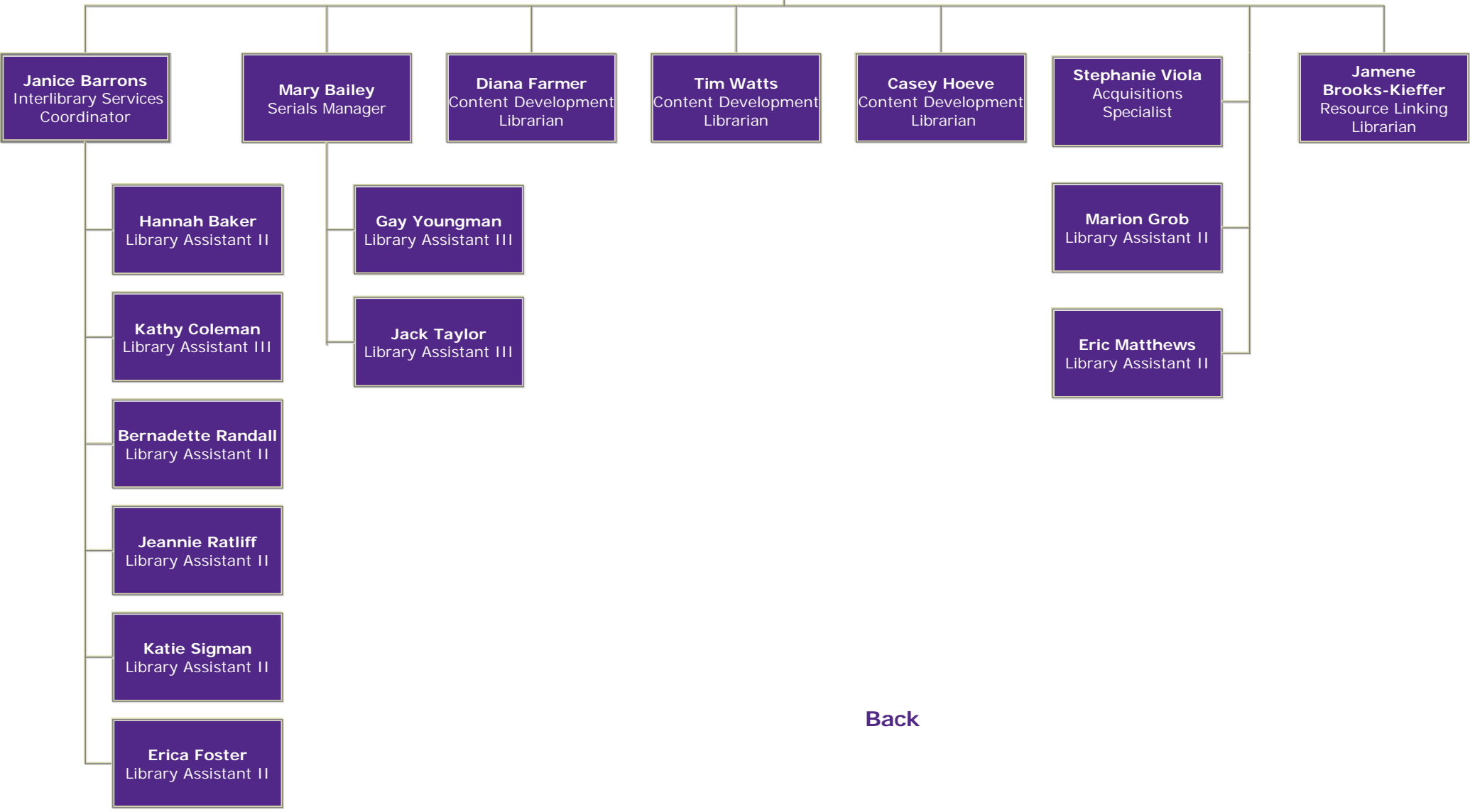


**University Archives & Special  
Collections Department**



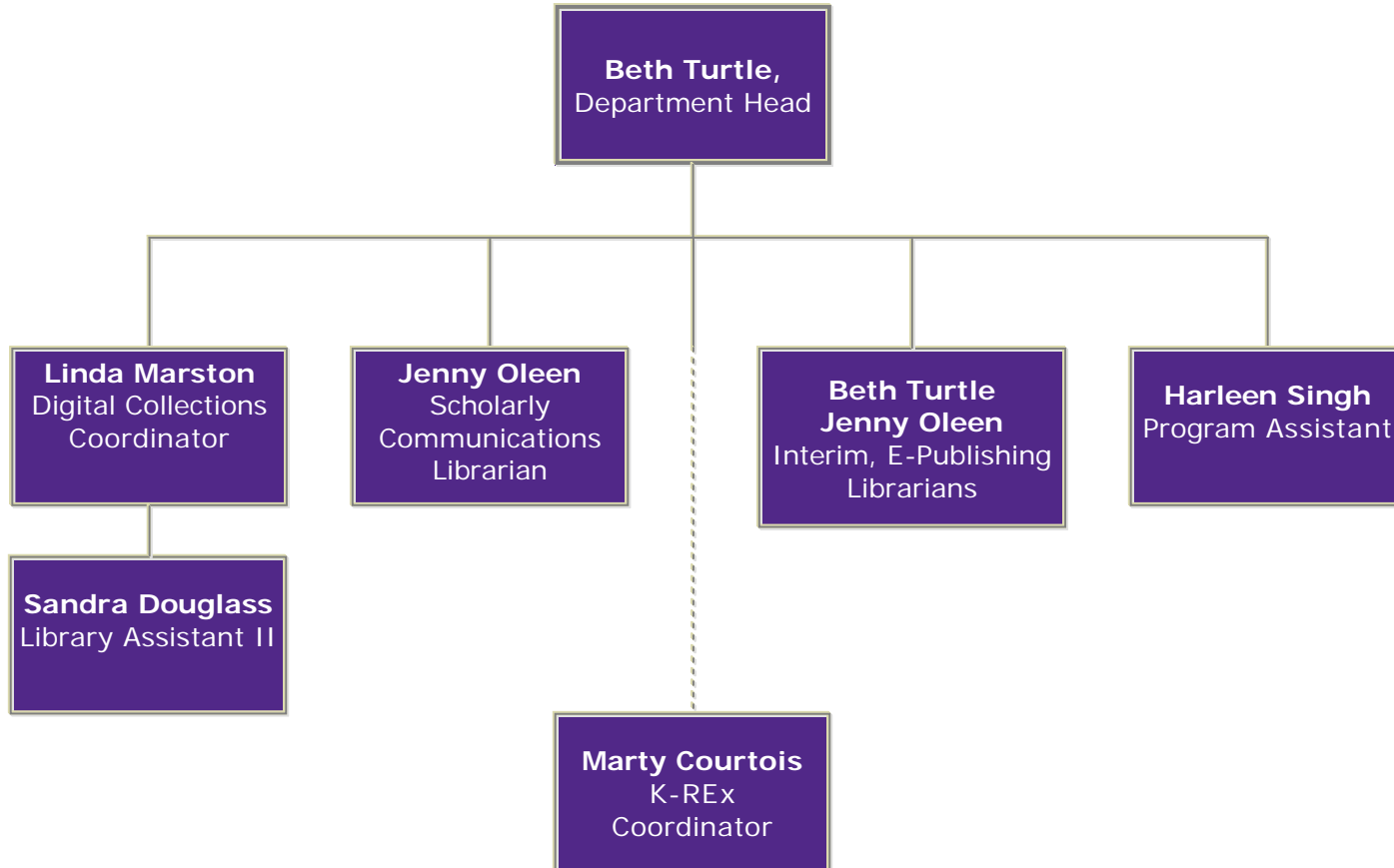
[Back](#)

**Jo Crawford**  
Department Head

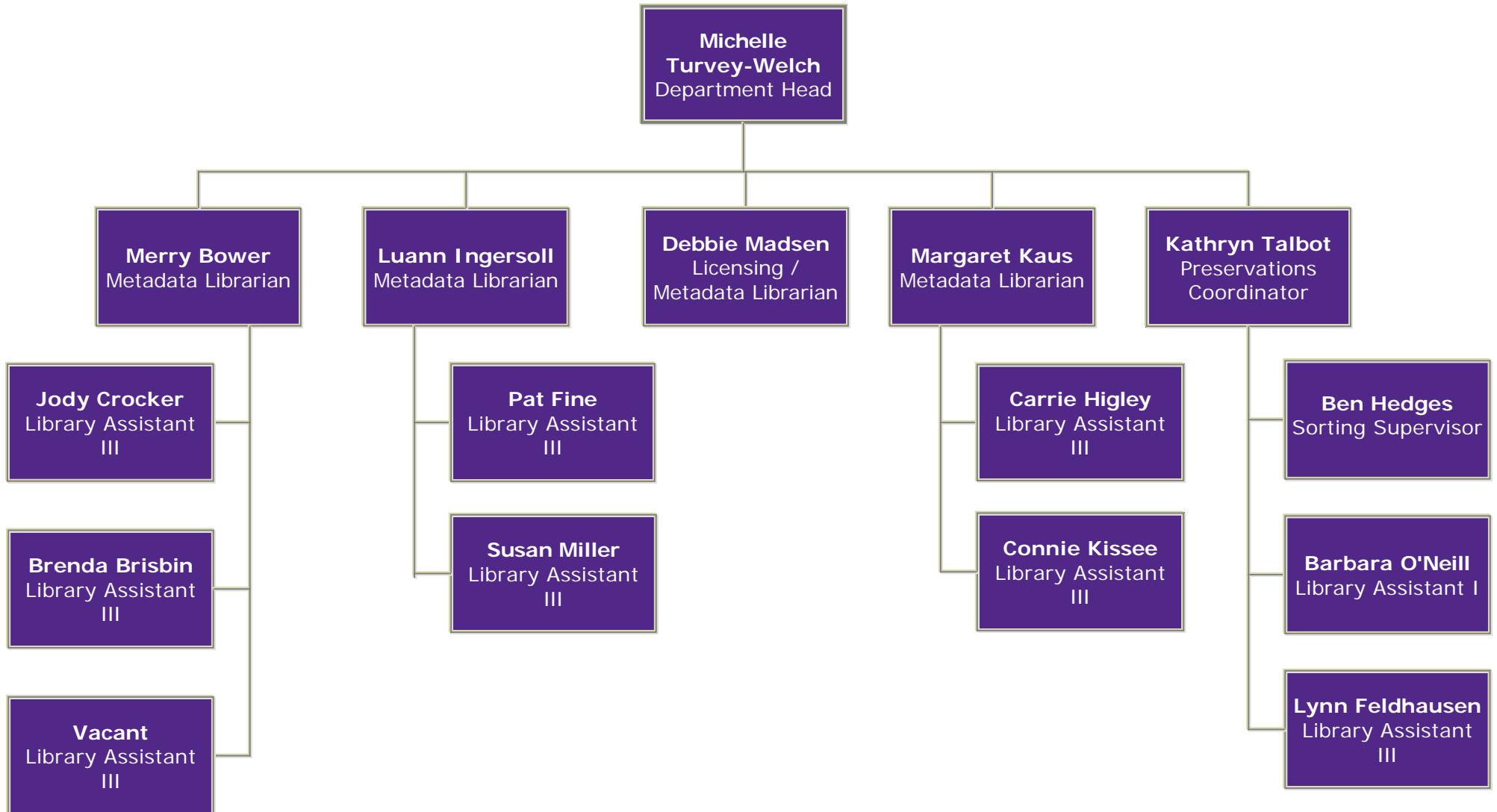


[Back](#)

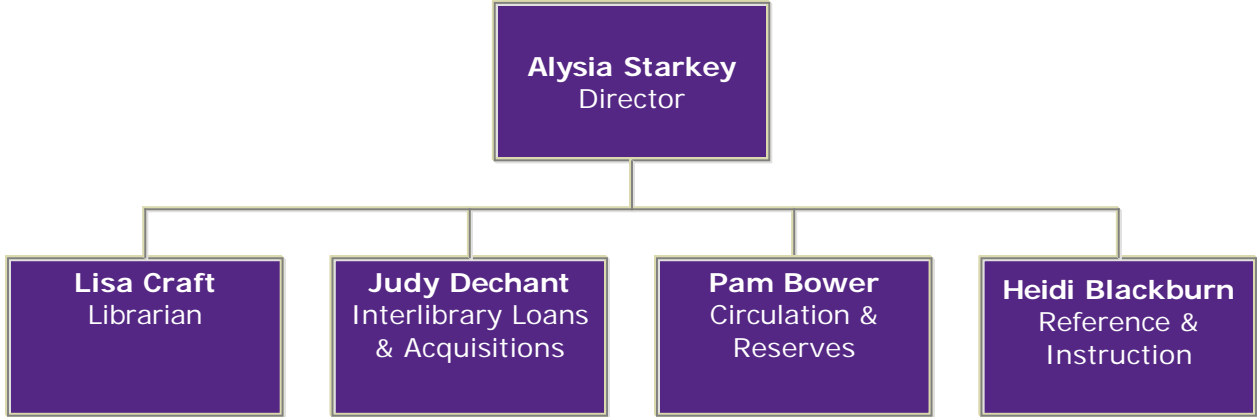
## Scholarly Communications & Publishing



[Back](#)



**K-State Salina Campus Library**



[Back](#)

### Veterinary Medicine Library

**Gayle Willard**  
Director Vet Med



**Jeff Gauss**  
Information Specialist

**Gina Scott**  
Instructional Serv. Coordinator

**Carol Elmore**  
Research Services Librarian

**Mary Girard**  
Librarian I

**Mal Hoover**  
Med/Sci Illustration

**Dave Adams**  
Photographer

**Susie Larson**  
Print Graphic Design

**Vacant**  
Lib. Asst. II

[Back](#)